

*(Ride-Along Continued from page 4)*

company driver for Con-way since 1987, driving over 3 million miles. Stephanie is a Captain on the 2013-2014 America’s Road Team.

Professional driver Monica Abdul-Rashid of Schneider National was the second driver in the trip. She was responsible for taking Brewster from Nashville to the final destination in Louisville, KY. She joined Schneider in June 2012 as a long-haul driver, has served as a training engineer, and currently works on a dedicated account.

“The reality of the commercial driver’s working environment was evident throughout the trip as we dealt with traffic congestion and unsafe driving maneuvers by car drivers who seemed unaware of their surroundings or the presence of large vehicles nearby. Both Stephanie and Monica were diligent in their situational awareness and provided a safe and enjoyable ride-along experience for me, in spite of the challenges along the road,” said Brewster.

Travel Centers of America in Nashville was the halfway point and meeting spot for the drivers. Kathy Perry, TA Petro Regional Sales Representative, provided a tour of their newly remodeled facility as well as hosting lunch for the women.

**ATRI Vice President Celebrates Anniversary**

At the ATRI Research Advisory Committee Annual Meeting held March 4-5 in Atlanta, ATRI Vice President Dan Murray was recognized for 20 years of service to the organization. Murray first started with the organization in April 1994 and was named Vice President in 2004.

In recognizing Dan for his service, ATRI President Rebecca Brewster commented, “Dan’s commitment to this organization and his expertise and talent are core to ATRI’s success.”



RAC Chairman Steve Niswander, Rebecca Brewster and Dan Murray

**The American Transportation Research Institute**

Atlanta • Sacramento • Minneapolis

950 N. Glebe Road  
Suite 210  
Arlington, VA 22203-4181

Phone: 703-838-1966  
Fax: 703-838-0291  
E-mail: [atri@trucking.org](mailto:atri@trucking.org)

*Knowledge and Excellence  
In Trucking and Transportation  
Research*

**Visit us online to order  
copies of ATRI’s  
research reports**

<http://www.ATRI-online.org>



**Looking for Individuals to Serve on RAC**

Every two years the ATRI Board of Directors appoints a new slate of members to its Research Advisory Committee. ATRI is now looking for individuals interested in serving on the 2015-2016 Research Advisory Committee, with terms beginning January 1, 2015. The RAC is comprised of motor carriers, industry suppliers, academia, government, law enforcement, commercial drivers and state trucking associations. RAC members meet once a year in Atlanta for a two-day event to identify the industry’s research priorities. RAC members also participate in several webinars and teleconferences throughout the year. If you are interested in being considered for a position on the RAC, please submit your letter of interest to [ATRI@trucking.org](mailto:ATRI@trucking.org).

**UPCOMING ATRI PRESENTATIONS**

- ★ June 18-19, KMTA Annual Conference, Rebecca Brewster, Owensboro, KY
- ★ June 22-25, TRB ICM Conference, Rebecca Brewster, Irvine, CA
- ★ June 30 - July 1, NATMEC, Jeff Short, Chicago, IL
- ★ July 14-15, NCTA Annual Conference, Rebecca Brewster, Hot Springs, VA
- ★ July 20-23, TAEC Annual Meeting, Rebecca Brewster, Bretton Woods, NH
- ★ July 23-25, Association of Energy Service Companies, Rebecca Brewster, Coeur d’Alene, ID
- ★ July 31-Aug 1, LMTA Annual Convention, Rebecca Brewster, Point Clear, Alabama
- ★ Aug 5-6, MTA Annual Conference, Rebecca Brewster, Alexandria, MN
- ★ Sept 4, Annual Steel Summit Conference, Rebecca Brewster, Atlanta, GA
- ★ Sept 9, CH Robinson User Conference, Dan Murray, Chicago, IL
- ★ Sept 23-24, IMTA Management Conference, Rebecca Brewster, Cedar Rapids, IA
- ★ Sept 25-26, ITA Annual Conference, Rebecca Brewster, Oak Brook, IL
- ★ Sept 26-27, IMTA Annual Conference, Rebecca Brewster, French Lick, IN

**INSIDE THIS ISSUE:**

ATRI identifies Problems with FMCSA HOS Field Study Report	2
ATRI Seeks For-Hire Motor Participate in data collection	3
ATRI Board Approves 2014 Research Priorities	3
ATRI Board Member Annette Sandberg	5
ATRI RAC Member Cheryl Bynum	5



The American Transportation Research Institute

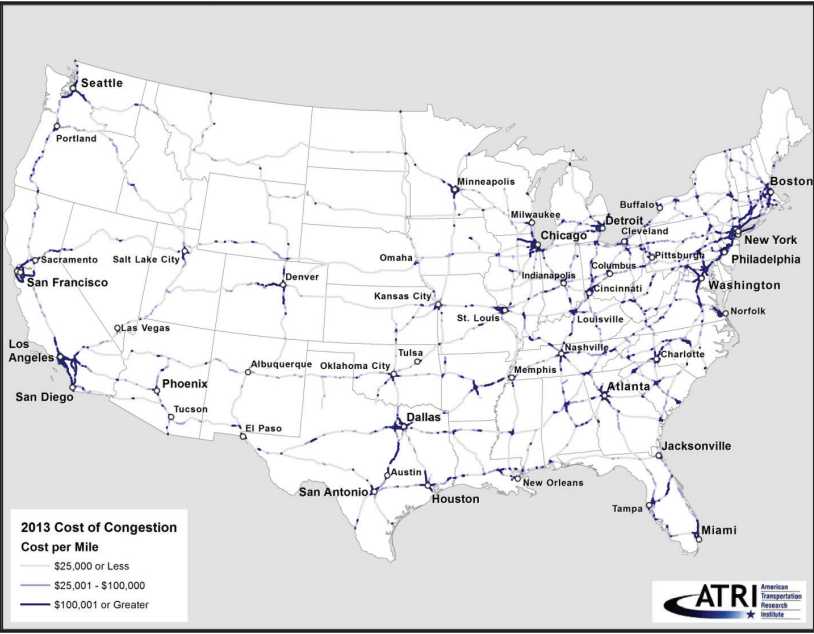
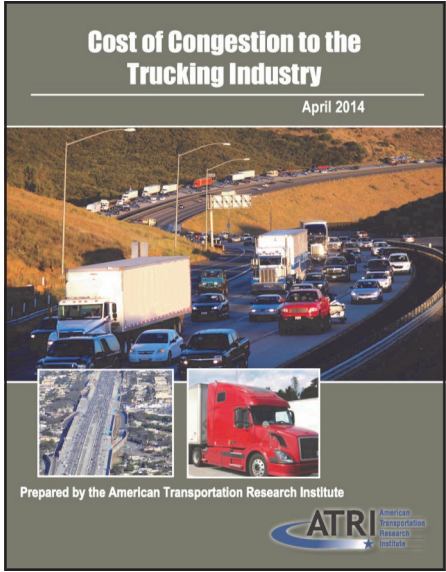
**Trucking Industry Sees \$9.2 Billion in Congestion Costs in 2013**

Congestion on the nation’s Interstate highways added over \$9.2 billion in operational costs to the trucking industry in 2013, according to the latest ATRI research. The ATRI study, *Cost of Congestion to the Trucking Industry*, utilized motor carrier financial data along with billions of anonymous truck GPS data points to calculate congestion delays and costs on each mile of Interstate roadway. Delay totaled over 141 million hours of lost productivity, which equated to over 51,000 truck drivers sitting idle for a working year.

ATRI’s analysis also established the states, metropolitan areas, and counties with the highest congestion costs. California led the nation with over \$1.7 billion in costs, followed by Texas with over \$1.0 billion. The Los Angeles metropolitan area saw the highest cost at nearly \$1.1 billion and New York City was close behind at \$984 million. Congestion tended to be most severe in urban areas, with 89 percent of the congestion costs concentrated on only 12 percent of the Interstate mileage. This concentration of congestion has been well-documented in previous work by ATRI which identified the worst truck bottlenecks in the U.S. Of the 100 worst bottlenecks in ATRI’s 2013 bottleneck analysis, 98 were identified as having “severe” congestion in this cost of congestion analysis.

The analysis also demonstrates the average impact of congestion costs on a per-truck basis. For example, a truck driven for 12,000 miles in 2013 saw an average congestion cost of \$408, while a truck driven for 150,000 miles had an average cost of \$5,094.

“Congestion is an unfortunate byproduct of our just-in-time economy, and it’s a significant roadblock to our country’s productivity as well as its global



2013-2014 Research Advisory Committee			
<b>Mr. Steve Niswander</b> RAC Chairman VP, Safety Policy & Regulatory Relations Groendyke Transport, Inc.	<b>Mr. Michael Conyngham</b> Director of Research International Brotherhood of Teamsters	<b>Mr. Vikas Jain</b> VP, Product Management Omnitracs LLC	<b>Mr. Dean Newell</b> VP, Safety Maverick USA, Inc.
<b>Mr. Duane Acklie</b> Chairman Crete Carrier Corporation	<b>Mr. Tom DiSalvi</b> Director of Loss Prevention Schneider National, Inc.	<b>Mr. Steve Keppler</b> Executive Director Commercial Vehicle Safety Alliance	<b>Mr. Richard Plewacki</b> Partner Benesch Friedlander Coplan & Arnoff
<b>Mr. Kirk Altrichter</b> VP – Maintenance Crete Carrier Corporation	<b>Mr. Chad England</b> Chief Executive Officer C.R. England	<b>Mr. Alan Korn</b> Director – Vehicle Control Systems Meritor WABCO	<b>Mr. Brett Sant</b> VP, Safety and Risk Management Knight Transportation, Inc.
<b>Ms. Susan Alt</b> Senior VP, Public Affairs Volvo Trucks North America	<b>Ms. Patti Gillette</b> Safety Director Colorado Motor Carriers Association	<b>Mr. Keith Klingenberg</b> Principal & Managing Director TrueNorth Companies	<b>Mr. Webb A. Shaw</b> VP – Editorial Resources J.J. Keller & Associates
<b>Mr. Andrew Boyle</b> Executive VP Boyle Transportation	<b>Mr. Matt Hart</b> Executive Director Illinois Trucking Association	<b>Mr. Michael Kray</b> Principal Planner Atlanta Regional Commission	<b>Dr. Frank Southworth</b> Principal Research Scientist Georgia Tech School of Civil and Environmental Engineering
<b>Mr. Randy Boyles</b> Senior VP, Tailored Solutions PeopleNet	<b>Ms. Kendra Hems</b> President New York State Motor Truck Association	<b>Mr. Chris McLoughlin</b> Cargo Risk Manager C.H. Robinson	<b>Mr. Keith Tuttle</b> President Motor Carrier Service Inc.
<b>Mr. Steve Bryan</b> Chief Executive Officer Vigillo, LLC	<b>Mr. Sanford Hodes</b> Senior VP & Deputy Gen. Counsel Ryder System, Inc.	<b>Ms. Jennifer Morrison</b> Vehicle Factors Engineer National Transportation Safety Board	<b>Mr. Tom Weakley</b> Director of Operations Owner-Operator Independent Drivers Association Foundation
<b>Ms. Cheryl Bynum</b> Manager, SmartWay Transport Partnership U.S. Environmental Protection Agency	<b>Ms. Barbara Ivanov</b> Director, Freight Systems Washington State DOT	<b>Mr. Robert Moseley, Jr.</b> Transportation Attorney Smith Moore Leatherwood	<b>Mr. Greer Woodruff</b> Senior VP of Corporate Safety & Security J.B. Hunt Transport Services, Inc
		<b>Mr. Scott Mugno</b> VP of Safety FedEx Ground	

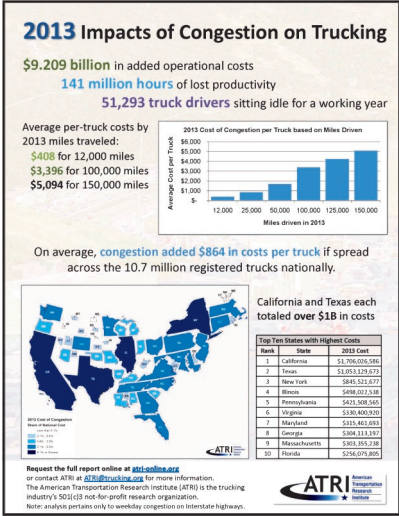
PERMIT NO. 523  
MARILETTA, GA  
PAID  
U.S. POSTAGE  
PRESORTED  
FIRST-CLASS

22203-4181  
Arlington, VA  
Suite 210  
950 N. Glebe Road  
**ATRI** American Transportation Research Institute

*(Continued on page 2)*



(Costs of Congestion Continued from page 1)



competitiveness,” said Jack Holmes, President of UPS Freight, the heavy freight division of UPS. “ATRI’s analysis quantifies congestion in a way that clearly shows the urgent need for highway investment.”

In addition to quantifying congestion costs, ATRI’s study features three case studies examining factors such as road construction and traffic incidents and their resulting impacts on the industry’s congestion costs. The case studies feature road construction projects in Louisiana and Arkansas and the May 2013 Skagit River Bridge collapse on I-5, just north of Mt. Vernon, Washington.

ATRI has developed a one-page infographic on this study which is available for download from the ATRI website at [www.atri-online.org](http://www.atri-online.org). A copy of the full report can also be ordered from ATRI.

### ATRI Identifies Problems with FMCSA Hours-of-Service Field Study Report

ATRI recently released a Technical Memorandum documenting the findings of its independent evaluation of the Federal Motor Carrier Safety Administration’s (FMCSA’s) field study report on the new Hours-of-Service (HOS) rules. FMCSA was directed by Congress as part of MAP-21 to study the efficacy of the restart provisions which went into effect July 1, 2013.

FMCSA’s field study collected fatigue measurements from 106 truck drivers during two duty cycles that included two restart breaks. FMCSA stated that their field study results supported the efficacy of the new restart rule. Following a detailed evaluation of the field study report, ATRI identified a variety of technical issues related to research design flaws, validity of measurement techniques and interpretations and data conflicts within and across the study.

ATRI’s Technical Memorandum documents the following issues with FMCSA’s report:

- ★ The field study report purports to have measured differences between restarts with one and two nighttime periods (1 a.m. to 5 .a.m.) but instead measured differences in restarts that range from 34 hours to an unknown/non-limited number of hours off-duty.
- ★ MAP-21 required that the field study be “representative of the drivers and motor carriers regulated by the hours of service regulations” but the study includes, on average, less than 12 days’ worth of data for each of only 106 drivers.
- ★ The FMCSA field study does not present research to support the limitation of the use of the 34-hour restart to once per week (168 hours).
- ★ Use of the 3-minute Psychomotor Vigilance Test (PVT) showed lapses of attention by drivers in both duty cycle groups, but offered no link between the average number of lapses, fatigue and the safe operation of commercial vehicles.
- ★ The two duty cycle groups had lane deviation measurements that differed by 1/10th of a centimeter and the study authors provide no evidence that these findings are relevant or have a nexus to driver fatigue in either of the two groups.

(Continued on page 3)

(FMCSA HOS Field Study Continued from page 2)

- ★ The difference in sleep obtained by the two duty cycle groups on their restart breaks differed by only six minutes per 24-hour period.
- ★ Average driver scores on the subjective sleepiness scale did not indicate any level of sleepiness.
- ★ The study confirms that drivers in the “two or more nighttime” group are more likely to drive during the day; a time when FMCSA’s own data shows a higher crash risk.

“FMCSA has heard loud and clear from carriers and drivers that the new rules are not advancing safety and are creating additional stress and fatigue on the part of truck drivers,” commented Steve Rush, President of Carbon Express, Inc. in Wharton, NJ. “ATRI’s analysis raises enough questions about FMCSA’s own study that should compel a comprehensive review of the entire rule.”

A copy of ATRI’s Technical Memorandum is available at [www.atri-online.org](http://www.atri-online.org).

### ATRI Seeks For-Hire Motor Carriers to Participate in Operational Costs Data Collection

ATRI recently launched its annual data collection initiative to update the *Operational Costs of Trucking* report. Through a brief online survey, ATRI seeks to capture basic cost information from for-hire carriers such as driver pay, fuel costs, insurance premiums and lease or purchase payments. Carriers are asked to provide full year 2013 cost per mile and cost per hour data for the latest update.

The results of this data collection, combined with the previous *Operational Costs of Trucking* reports, will yield six full years (2008 – 2013) of trucking cost information derived directly from fleet operations. This research provides carriers with an important high-level benchmarking tool and government agencies with real world data for future infrastructure improvement analyses.

For-hire motor carriers are encouraged to provide confidential operational cost data through ATRI’s survey, available online at [www.atri-online.org](http://www.atri-online.org). The results of this study will be available later this year.

### ATRI Board Approves Research Priorities for 2014

At its meeting held April 30, 2014, the ATRI Board of Directors approved the list of 2014 research priorities recommended by ATRI’s Research Advisory Committee (RAC). The list of priority research topics was identified by the RAC at its two-day annual meeting held March 4-5 in Atlanta.

Among the top priority topics for 2014 are studies on assessing the impact of detention times on driver safety and productivity and an updated data analysis of impacts from the new hours-of-service rules. ATRI staff will be initiating work on the top priority studies in the near future.



ATRI RAC members discuss research priorities.

### Did you know..?

ATRI makes all of its studies available free of charge as part of its primary mission to conduct transportation research focused on the trucking industry’s essential role in a safe, secure and efficient transportation system. As the trucking industry’s 501(c)3 not-for-profit research organization, ATRI depends on the financial support of freight transportation stakeholders to advance the research agenda identified by its Research Advisory Committee. Please consider a charitable contribution to ATRI from your organization in support of critical industry research. To make a charitable contribution to ATRI, visit <http://atri-online.org/about-atri/support-atri/>.

**Board of Directors**

**Mr. Steve Williams**  
ATRI Chairman  
Chairman and CEO  
Maverick USA, Inc.

**Mr. Michael S. Card**  
President  
Combined Transport, Inc.

**Mr. Rich Freeland**  
President-Engine Business  
Cummins Inc.

**Mr. Hugh H. Fugleberg**  
President and COO  
Great West Casualty Company

**Mr. Jack Holmes**  
President  
UPS Freight

**Mr. Dave Huneryager**  
President and CEO  
Tennessee Trucking Association

**Mr. Chris Lofgren**  
President and CEO  
Schneider National, Inc.

**Mr. William J. Logue**  
President and CEO  
FedEx Freight

**Mr. Jeffrey J. McCaig**  
President and CEO  
Trimac Transportation, Inc.

**Ms. Judy McReynolds**  
President and CEO  
Arkansas Best Corporation

**Mr. Gregory L. Owen**  
Head Coach and CEO  
Ability Tri-Modal Transportation Services

**Ms. Annette Sandberg**  
President and CEO  
Transsafe Consulting, LLC

**Mr. Douglas W. Stotlar**  
President and CEO  
Con-way Inc.

**Ms. Rebecca M. Brewster**  
President and COO  
American Transportation Research Institute

**Hon. Bill Graves**  
President and CEO  
American Trucking Associations

**Annette Sandberg Joins ATRI Board of Directors**

The newest member of the ATRI Board of Directors is Annette M. Sandberg , CEO of TransSafe Consulting. Ms. Sandberg previously served as Administrator of the Federal Motor Carrier Safety Administration (FMCSA) following her nomination by President George W. Bush and confirmation by the Senate. In addition to serving as FMCSA Administrator, Ms. Sandberg also served as Deputy Administrator of the National Highway Traffic Safety Administration (NHTSA) and as Chief of the Washington State Patrol, where she was the first woman to lead a state police agency.

In announcing her ATRI Board appointment, ATRI Chairman Steve Williams, CEO of Maverick Transportation, commented, “Annette’s extensive experience and leadership in advancing the trucking industry’s safety agenda is a perfect complement to ATRI’s mission of improved industry safety and productivity. We are fortunate to have her join our Board of industry CEOs and know that the trucking industry will benefit from her involvement in ATRI’s research.”



**RAC Member Cheryl Bynum**

ATRI RAC member Cheryl L. Bynum directs the U.S. Environmental Protection Agency partnership for sustainable goods movement, the SmartWay™ Transport Partnership. SmartWay brings together thousands of businesses and other stakeholders and provides them with tools, methods and incentives to accelerate the use of advanced technologies and best practices that improve the economic, energy and environmental sustainability of global supply chains. Before assuming her current position, Ms. Bynum led SmartWay’s technology efforts, conducting test programs, developing test methods and developing requirements for SmartWay -designated vehicles and SmartWay-verified equipment. Prior to joining EPA, Ms. Bynum held a number of positions in the transportation and supply chain industry, including serving as equipment control manager for large maritime shipping line, and as a steamship agent at a port. Cheryl is a graduate of the University of Michigan and resides in Ann Arbor, Michigan.

**ATRI President Participates in Ride-Along**

ATRI President and Chief Operating Officer Rebecca Brewster had the opportunity to share the road with two professional drivers as part of a ride-along organized by the Women in Trucking Association (WIT). Brewster shared the cab with two highly qualified female drivers from Atlanta to the Mid-America Trucking Show in Louisville, KY where Brewster was the featured speaker at the 5th Annual WIT “Salute to Women Behind the Wheel.” The Ride -Along took place Wednesday, March 26th.



Stephanie Klang with Con-way Truckload was selected as the first professional driver, taking Brewster from Marietta, GA to Nashville, TN. Klang has been a

(Continued on page 5)