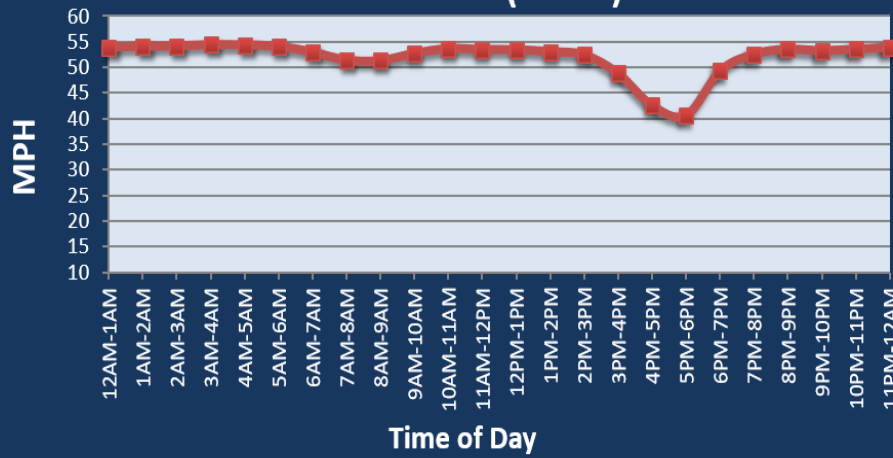


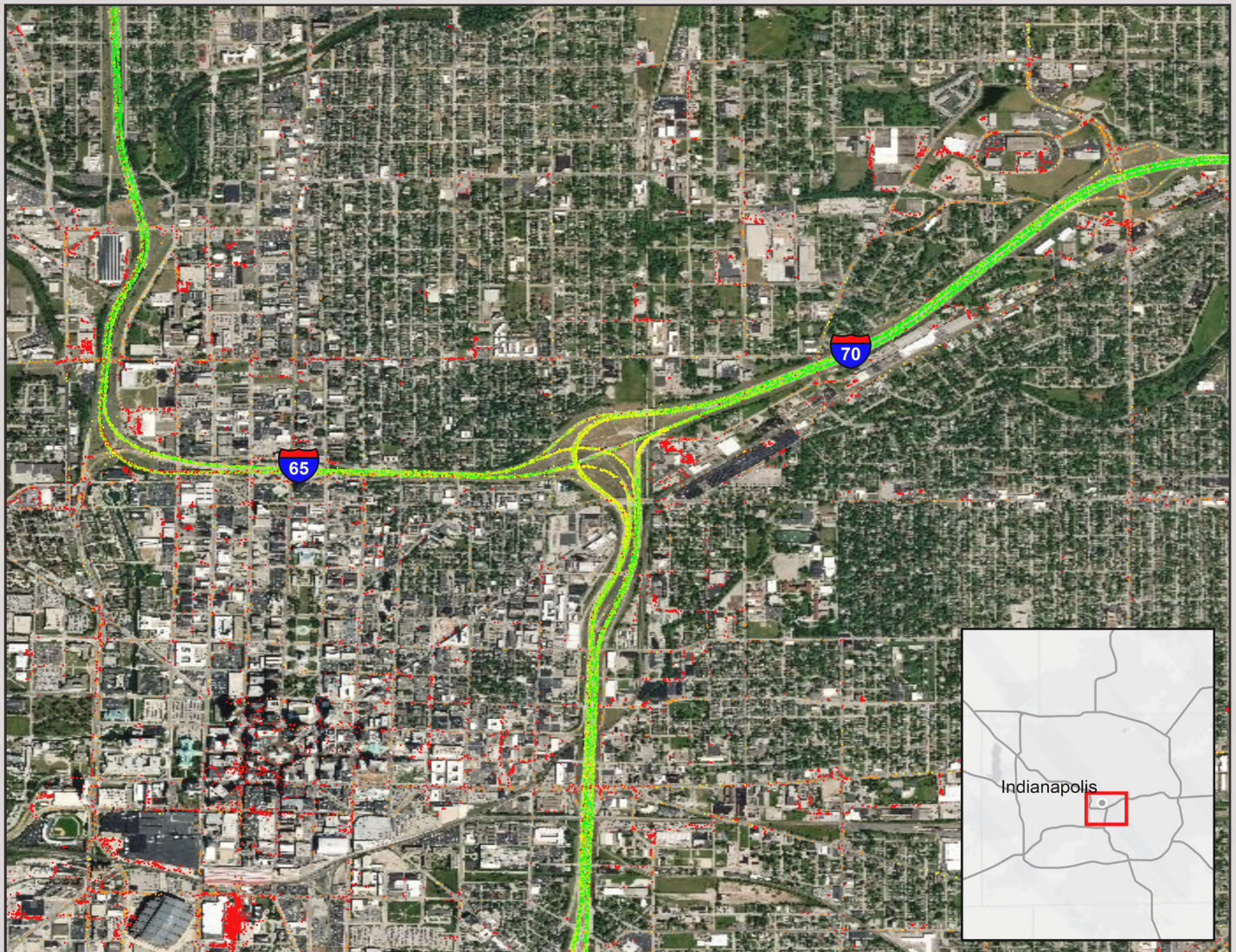
Indianapolis, IN: I-65 at I-70 (North)

Average Speed by Time of Day
I-65 at I-70 (North)



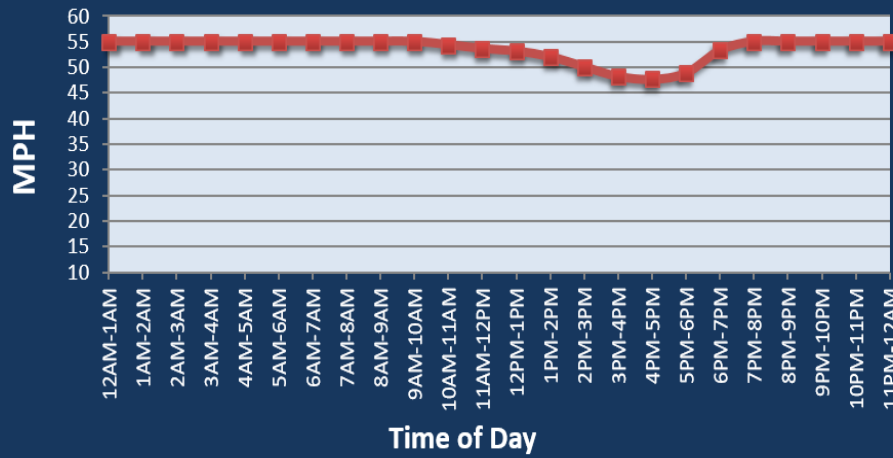
Summary

National Ranking by Congestion Index	36
Average Speed	51.2
Peak Average Speed	47
Nonpeak Average Speed	53
Nonpeak/Peak Ratio	1.13
Peak Average Speed Percent Change 2019 - 2020	36.2%



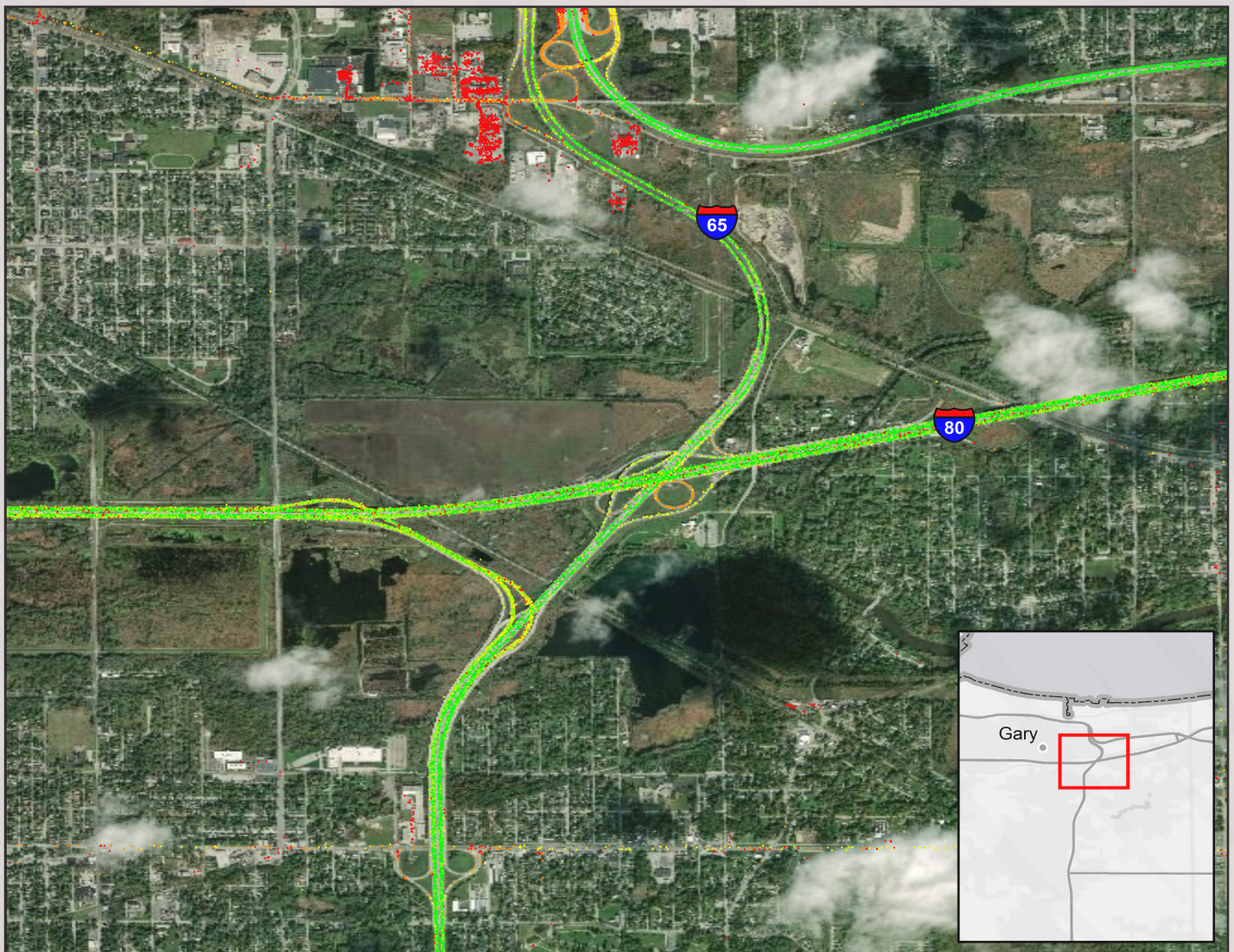
Gary, IN: I-65 at I-80

Average Speed by Time of Day
I-65 at I-80



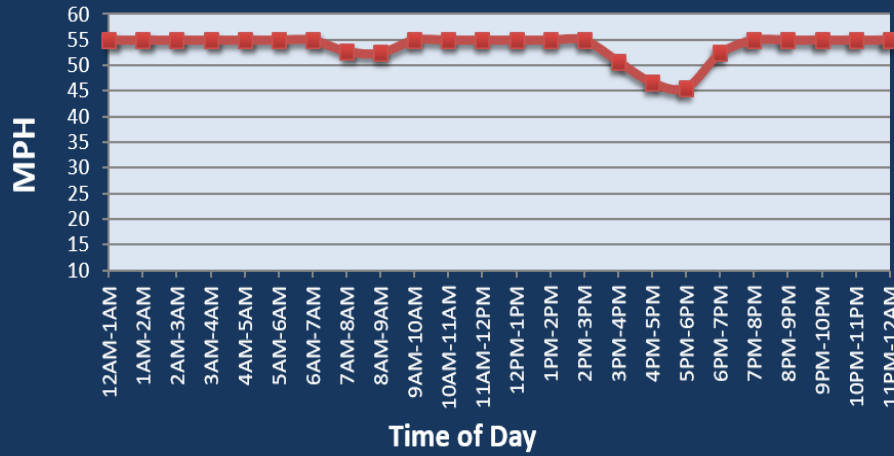
Summary

National Ranking by Congestion Index	48
Average Speed	53.2
Peak Average Speed	52.3
Nonpeak Average Speed	53.5
Nonpeak/Peak Ratio	1.02
Peak Average Speed Percent Change 2019 - 2020	7.6%



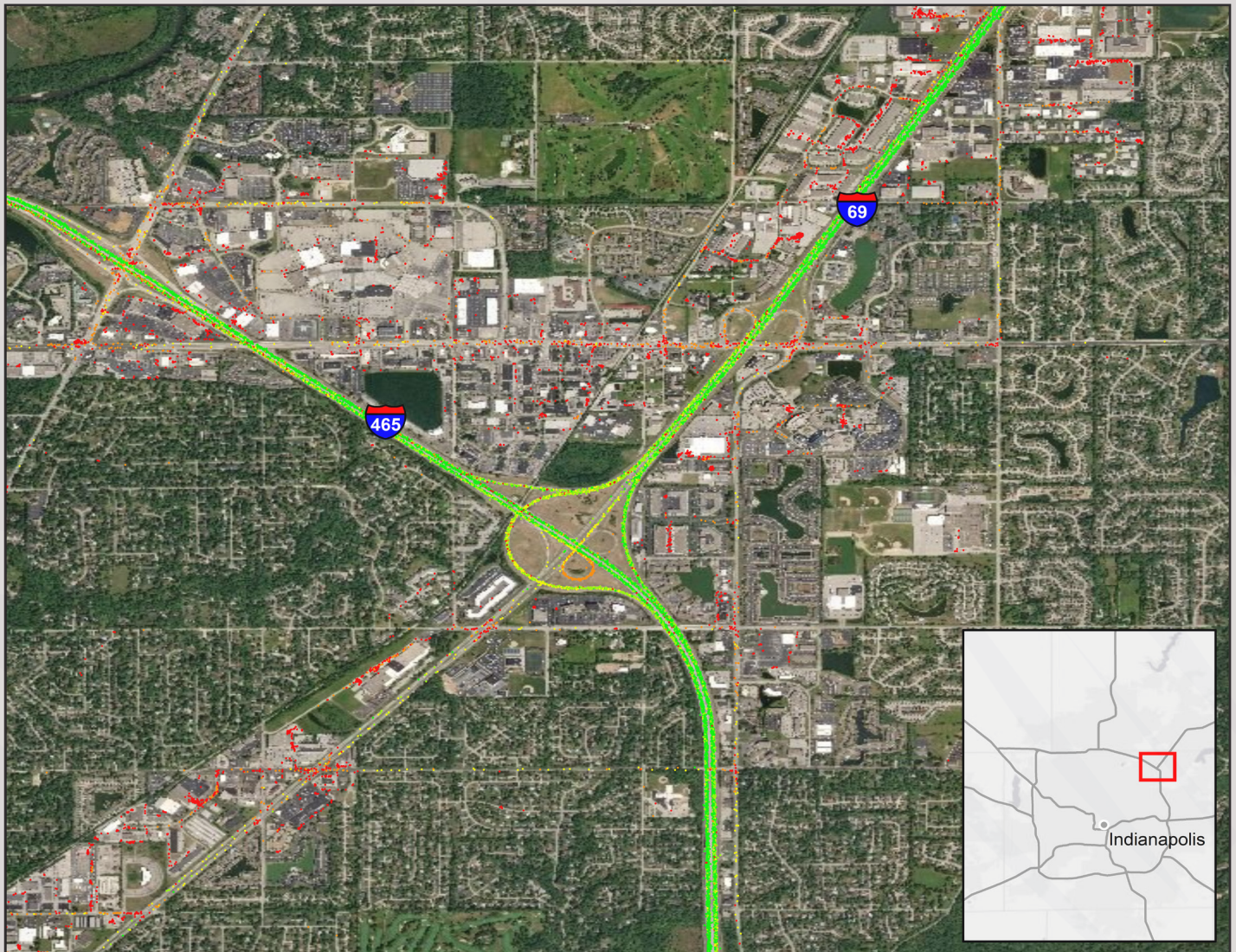
Indianapolis, IN: I-465 at I-69

**Average Speed by Time of Day
I-465 at I-69**



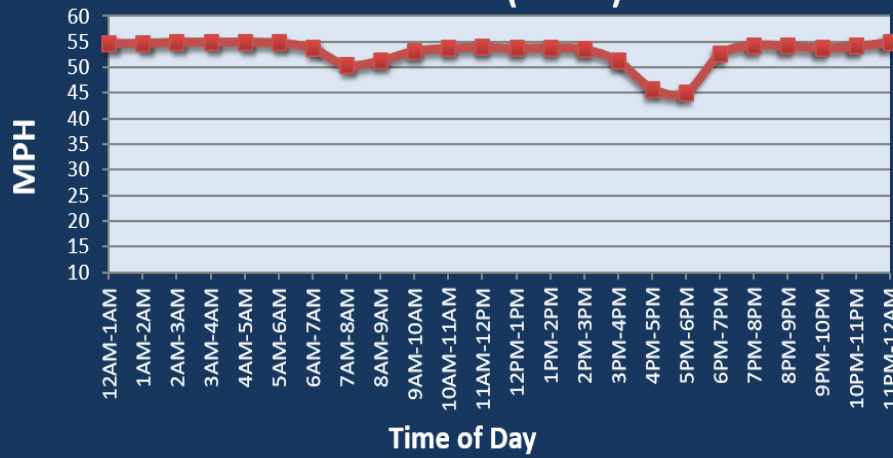
Summary

National Ranking by Congestion Index	96
Average Speed	53.3
Peak Average Speed	50.3
Nonpeak Average Speed	54.6
Nonpeak/Peak Ratio	1.09
Peak Average Speed Percent Change 2019 - 2020	20.4%



Indianapolis, IN: I-65 at I-70 (South)

Average Speed by Time of Day
I-65 at I-70 (South)



Summary

National Ranking by Congestion Index	99
Average Speed	52.5
Peak Average Speed	49.3
Nonpeak Average Speed	53.8
Nonpeak/Peak Ratio	1.09
Peak Average Speed Percent Change 2019 - 2020	41.3%

