

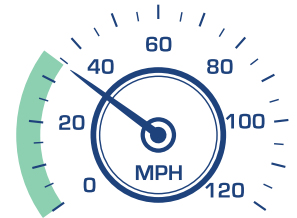
THE NATION'S TOP TRUCK BOTTLENECKS 2025

Since 2002, the American Transportation Research Institute (ATRI) has collected and processed truck GPS data in support of the U.S. Department of Transportation Freight Mobility Initiative. Utilizing an extensive database of freight truck GPS data, ATRI develops and monitors a series of key performance measures on the nation's freight transportation system. Among its many GPS analyses, ATRI converts its truck GPS dataset into an ongoing truck bottleneck analysis that is used to quantify the impact of traffic congestion on truck-borne freight at over 325 specific locations. While other outside analyses may identify congested corridors, no dataset available today specifically identifies granular chokepoints in the nation's truck freight transportation system.

Measuring the performance of freight movement across our nation's highways is critical to understanding where and at what level investments should be made. The information provided through this research empowers decision-making in both the private and public sectors by helping stakeholders better understand how congestion and delays constrain mobility on the U.S. highway transportation system. ATRI's annual bottleneck list provides a clear roadmap for reducing supply chain impediments and guiding investment decisions as Congress begins to focus attention on our country's next transportation investment reauthorization bill.

ATRI's bottleneck analysis incorporates and synthesizes several unique components, including a massive database of truck GPS data at freight-significant locations throughout the U.S., and a speed/volume algorithm that quantifies the impact of congestion on truck-based freight. In addition, the annual reports provide a chronological repository of mobility profiles, allowing congestion changes to be assessed over time. This allows both transportation analysts and planners to conduct performance benchmarking and identify influential factors contributing to congestion and the requisite consequences on freight mobility.

BY THE NUMBERS



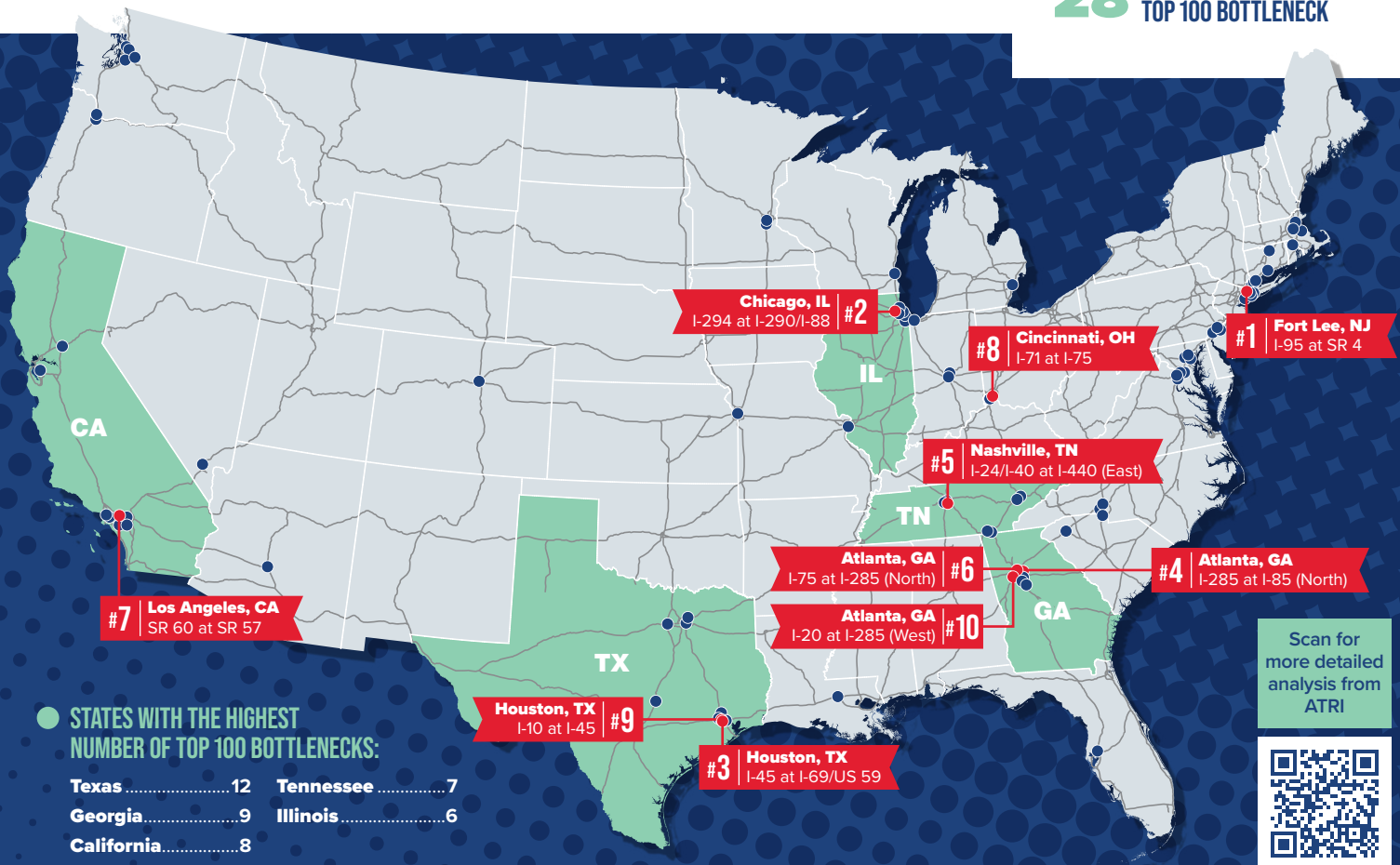
AVERAGE PEAK HOUR TRUCK SPEED:
34.2 mph

▼ **DOWN 3% YEAR-OVER-YEAR**

TOP 100 BOTTLENECKS WITH AVERAGE TRUCK SPEEDS <45 MPH:



28 STATES WITH AT LEAST 1 TOP 100 BOTTLENECK



Scan for more detailed analysis from ATRI



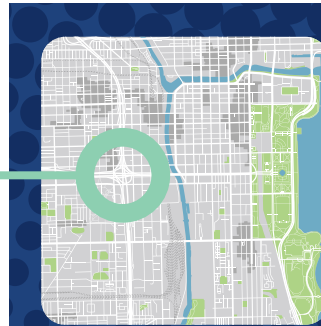
2025 TOP TRUCK BOTTLENECKS

- 1 **Fort Lee, NJ:** I-95 at SR 4
- 2 **Chicago, IL:** I-294 at I-290/I-88
- 3 **Houston, TX:** I-45 at I-69/US 59
- 4 **Atlanta, GA:** I-285 at I-85 (North)
- 5 **Nashville, TN:** I-24/I-40 at I-440 (East)
- 6 **Atlanta, GA:** I-75 at I-285 (North)
- 7 **Los Angeles, CA:** SR 60 at SR 57
- 8 **Cincinnati, OH:** I-71 at I-75
- 9 **Houston, TX:** I-10 at I-45
- 10 **Atlanta, GA:** I-20 at I-285 (West)

- 11 **Hartford, CT:** I-84 at I-91
- 12 **McDonough, GA:** I-75
- 13 **Dallas, TX:** I-45 at I-30
- 14 **Atlanta, GA:** I-20 at I-285 (East)
- 15 **Chicago, IL:** I-290 at I-90/I-94
- 16 **Nashville, TN:** I-40 at I-65 (East)
- 17 **Indianapolis, IN:** I-65 at I-70 (North)
- 18 **Los Angeles, CA:** I-710 at I-105
- 19 **Washington, DC:** I-495 (West Side)
- 20 **Ontario, CA:** I-10 at I-15

- 21 **Chicago, IL:** I-55
- 22 **Houston, TX:** I-45 at I-610 (North)
- 23 **Chicago, IL:** I-80 at I-94
- 24 **Baton Rouge, LA:** I-10 at I-110
- 25 **Providence, RI:** I-95 at I-195
- 26 **Denver, CO:** I-70 at I-25
- 27 **Portland, OR:** I-5 at I-84
- 28 **Chattanooga, TN:** I-75 at I-24
- 29 **Atlanta, GA:** I-285 at SR 400
- 30 **Houston, TX:** I-10 at I-610 (West)

- 31 **Portland, OR:** I-5 at Columbia River
- 32 **Detroit, MI:** I-94 at I-75
- 33 **Indianapolis, IN:** I-65 at I-70 (South)
- 34 **Philadelphia, PA:** I-76 at I-676
- 35 **Brooklyn, NY:** I-278 at Belt Parkway
- 36 **Charlotte, NC:** I-77 near Lake Norman
- 37 **Chicago, IL:** I-90 at I-94 (North)
- 38 **Atlanta, GA:** I-20 at I-75/I-85
- 39 **Norwalk, CT:** I-95
- 40 **Corona, CA:** I-15 at SR 91



Infrastructure Investment Makes Impact in Chicago

Once the #1 truck bottleneck in the country for three years in a row, Chicago's newly-constructed Byrnes Interchange saw **rush hour truck speeds improve by nearly 25 percent** once construction was completed.

- 41 **Greenville, SC:** I-85 at I-385
- 42 **Stamford, CT:** I-95
- 43 **Minneapolis - St. Paul, MN:** I-35W at I-494
- 44 **Knoxville, TN:** I-40/I-75 at I-140
- 45 **Denver, CO:** I-25 at I-76
- 46 **Chicago, IL:** I-90 at I-94 (South)
- 47 **Seattle, WA:** I-5 at I-90
- 48 **Queens, NY:** I-495
- 49 **Denver, CO:** I-270
- 50 **Oakland, CA:** I-880 at I-238

- 51 **Federal Way, WA:** SR 18 at I-5
- 52 **Charlotte, NC:** I-77 at I-485 (South)
- 53 **Nashville, TN:** I-65 at I-24
- 54 **Denver, CO:** I-70 at I-270
- 55 **Tiger Mountain Summit, WA:** SR 18
- 56 **Chattanooga, TN:** I-24 at US 27
- 57 **Houston, TX:** I-610 at US 290
- 58 **Philadelphia, PA:** I-76 at US 1
- 59 **Gary, IN:** I-65 at I-80
- 60 **Charlotte, NC:** I-85 at I-485 (West)

- 61 **Houston, TX:** I-10 at I-610 (East)
- 62 **Auburn, WA:** SR 18 at SR 167
- 63 **St. Louis, MO:** I-64/I-55 at I-44
- 64 **Baltimore, MD:** I-695 at I-70
- 65 **Austin, TX:** I-35
- 66 **Philadelphia, PA:** I-476 at I-95
- 67 **Boston, MA:** I-93 at SR 3
- 68 **Knoxville, TN:** I-40 at I-275
- 69 **Tampa, FL:** I-4 at I-275
- 70 **Boston, MA:** I-95 at I-90

- 71 **Indianapolis, IN:** I-465 at I-69
- 72 **Los Angeles, CA:** I-110 at I-105
- 73 **Ft. Worth, TX:** I-35W at I-30
- 74 **Seattle, WA:** I-90 at I-405
- 75 **Rye, NY:** I-95 at I-287
- 76 **Houston, TX:** I-45 at Sam Houston Tollway (N)
- 77 **Dallas, TX:** US 75 at I-635
- 78 **Camden, NJ:** I-76 at I-676
- 79 **Bronx, NY:** I-678
- 80 **Atlanta, GA:** I-75 at I-85

- 81 **Milwaukee, WI:** I-94/I-794 at I-43
- 82 **Atlanta, GA:** I-75 at I-675
- 83 **Washington, DC:** I-495 at I-66
- 84 **Phoenix, AZ:** I-17 at I-10
- 85 **Houston, TX:** I-10 at I-69/US 59
- 86 **Washington, DC:** I-495 at I-270 (West)
- 87 **Baltimore, MD:** I-695 at I-83
- 88 **Cincinnati, OH:** I-75/I-71 at I-275
- 89 **Boston, MA:** I-95 at I-93 (North)
- 90 **Baltimore, MD:** I-95 at I-695 (South)

- 91 **Los Angeles, CA:** SR 91 at SR 55
- 92 **Sacramento, CA:** I-80 at US 50
- 93 **New Haven, CT:** I-95 at I-91
- 94 **Baltimore, MD:** I-95 at I-395
- 95 **Milwaukee, WI:** Mitchell Interchange - I-94/I-894
- 96 **Las Vegas, NV:** I-15 at I-515
- 97 **Washington, DC:** I-95 at I-495 (North)
- 98 **Kansas City, MO:** I-70/I-670 at US 71
- 99 **Minneapolis - St. Paul, MN:** I-35W at I-94
- 100 **Manhasset, NY:** I-495 at Shelter Rock Road