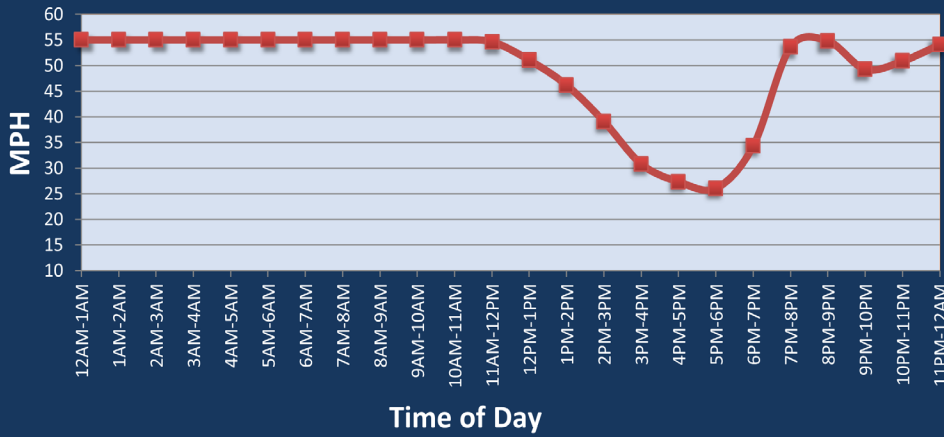




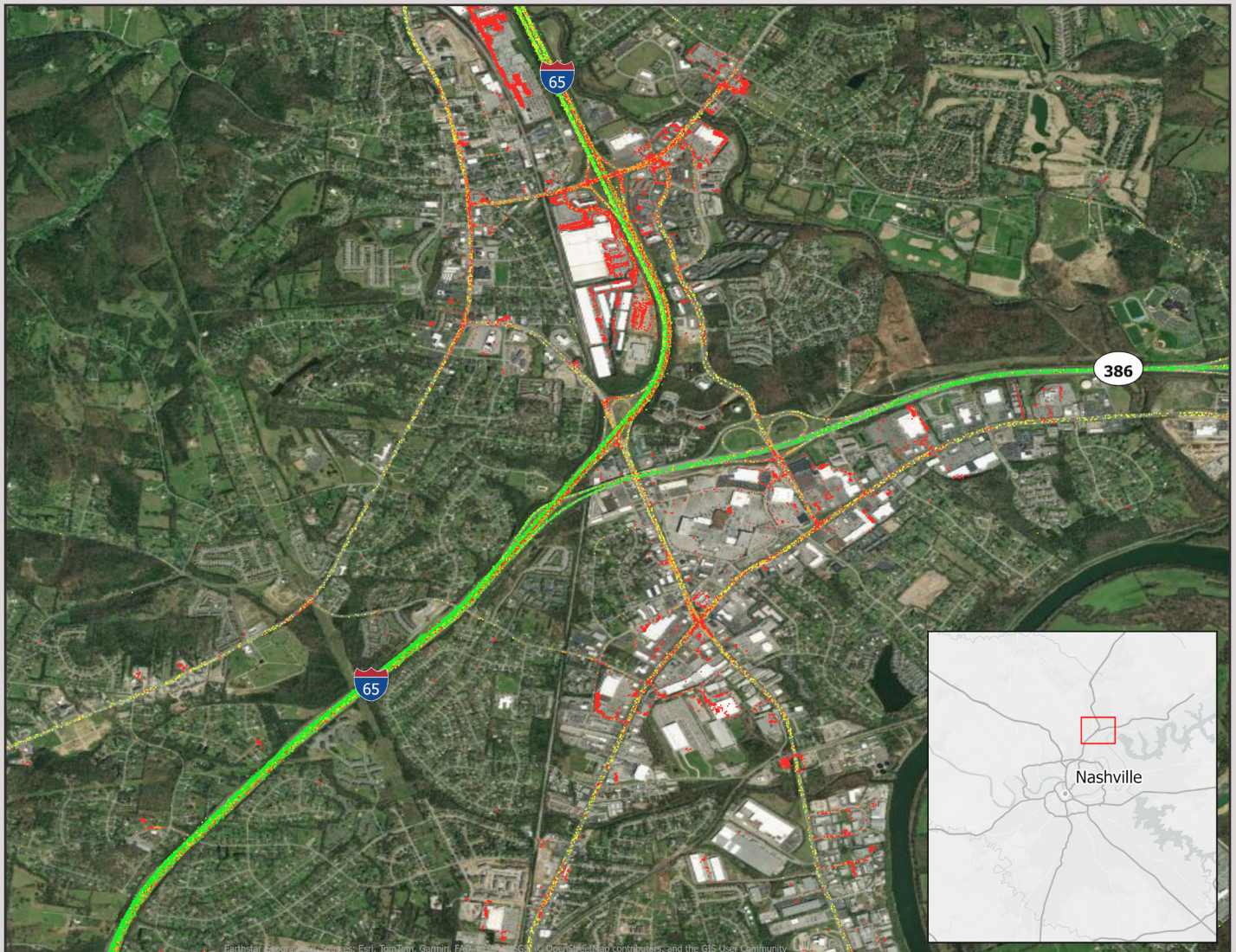
Nashville, TN: I-65 at SR 386

Average Speed by Time of Day I-65 at SR 386



Summary

National Ranking by Congestion Index	67
Rank Change 2024 - 2025	38
Average Speed	45.3
Peak Average Speed	37.7
Nonpeak Average Speed	49
Nonpeak / Peak Ratio	1.3
Peak Average Speed Percent Change 2024 - 2025	-8.6%



Particular Attribution: Google, Esri, TomTom, Garmin, FAD, HERE, DeLorme, OpenStreetMap contributors, and the GIS User Community